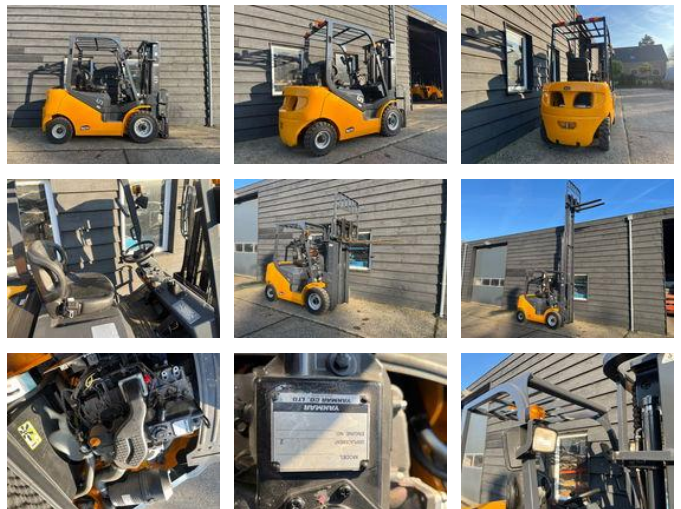


UN Heli EP Hangcha 2500KG Diesel NIEUW

General features

Brand	UN
Subcategory	Forklift
Condition	Used



Characteristics

Lifting capacity	2.500kg
Lifting height	4.700mm
Mast type	Triplex

UN Heli EP Hangcha 2500KG Diesel NIEUW

Technical specifications

Transmission

Automatic

Accessories